



MONTHLY MEMBERSHIP PROGRESS REPORT

District 5 SKS

Results as of: 5/31/2017

GMT: DENNIS STEVENSON

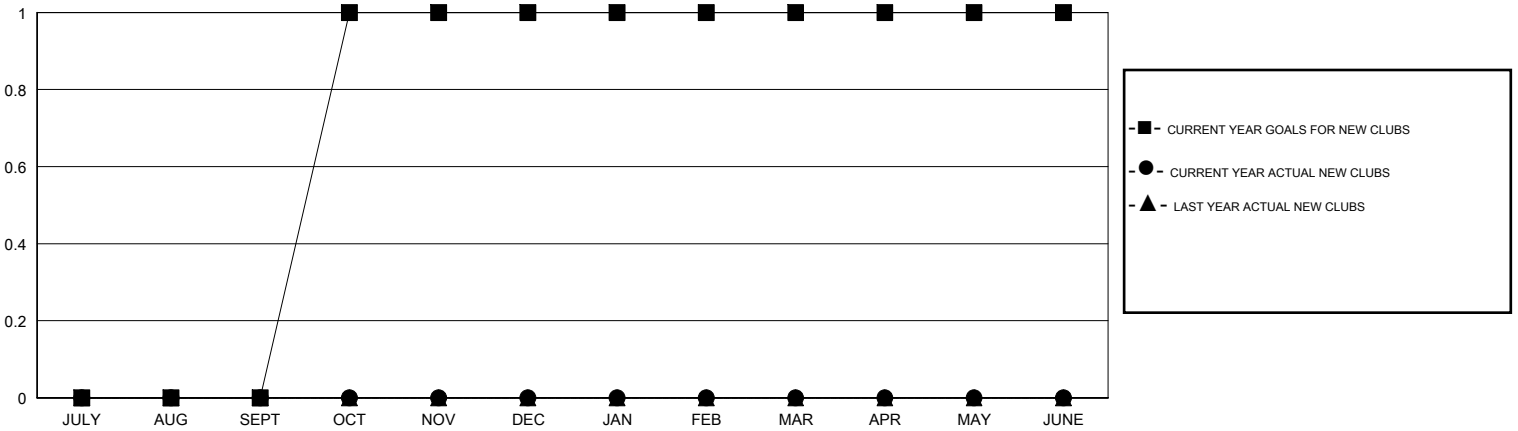
LOCATION CANADA

GMT CA

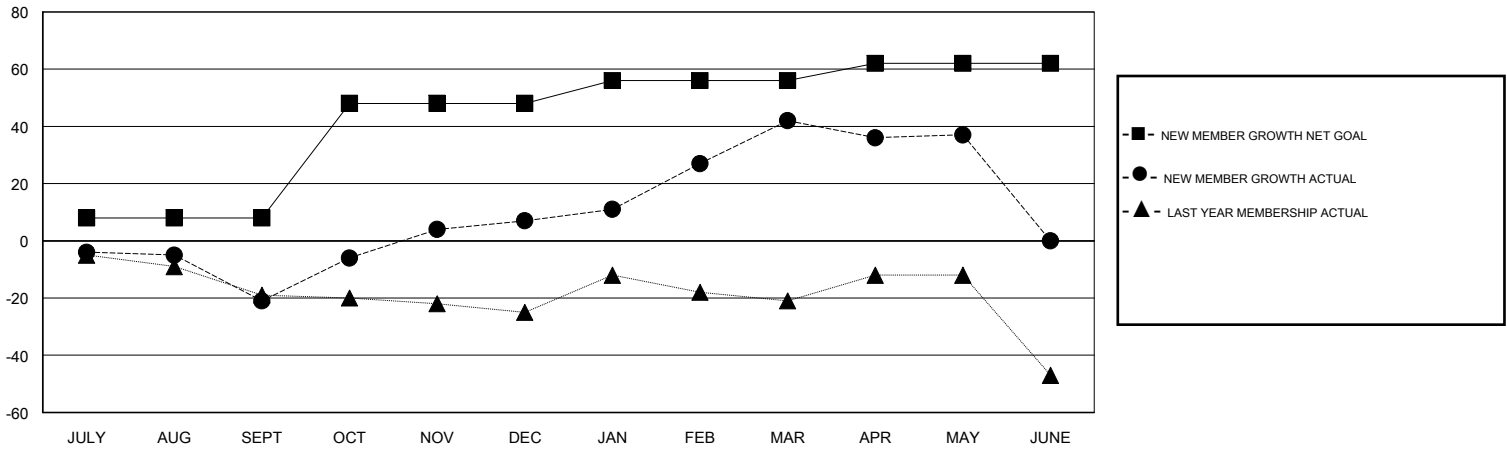
| Clubs | | | |
|-----------------------|---------------|-----------|---------------|
| RESULTS FOR 2016-2017 | | | |
| QUARTER | NEW CLUB GOAL | NEW CLUBS | DROPPED CLUBS |
| JULY/AUG/SEPT | 0 | 0 | 2 |
| OCT/NOV/DEC | 1 | 0 | 0 |
| JAN/FEB/MAR | 0 | 0 | 0 |
| APR/MAY/JUNE | 0 | 0 | 0 |

| Members | | | |
|-----------------------|--|--|--|
| RESULTS FOR 2016-2017 | | | |
| QUARTER | NEW MEMBER GROWTH NET GOAL (not reinstated or transfers) | NEW MEMBER GROWTH ACTUAL (not reinstated or transfers) | DROPPED MEMBERS ACTUAL (including transfers) |
| JULY/AUG/SEPT | 8 | 3 | 24 |
| OCT/NOV/DEC | 40 | 62 | 34 |
| JAN/FEB/MAR | 8 | 53 | 18 |
| APR/MAY/JUNE | 6 | 20 | 25 |

GOALS AND ACTUAL NEW CLUBS CUMULATIVE



GOALS AND ACTUAL MEMBERS CUMULATIVE



| | | |
|------------------------|---|-------------------------------------|
| DROPPED CLUBS: 2 | 44 CLUBS OF 77 ADDED 1 OR MORE NEW MEMBERS | GENDER DISTRIBUTION |
| | | MALE 1,292 (77.74%) |
| | | FEMALE 370 (22.26%) |
| DROPPED MEMBERS | CLICK HERE FOR CUMULATIVE MEMBERSHIP DATA | TOTAL FAMILY UNIT MEMBERS 213 |
| DECEASED 12 | | FAMILY MEMBERS PAYING HALF DUES 107 |
| CLUB CANCELLED 0 | | |
| OTHER 89 | | |
| TOTAL 101 | | |